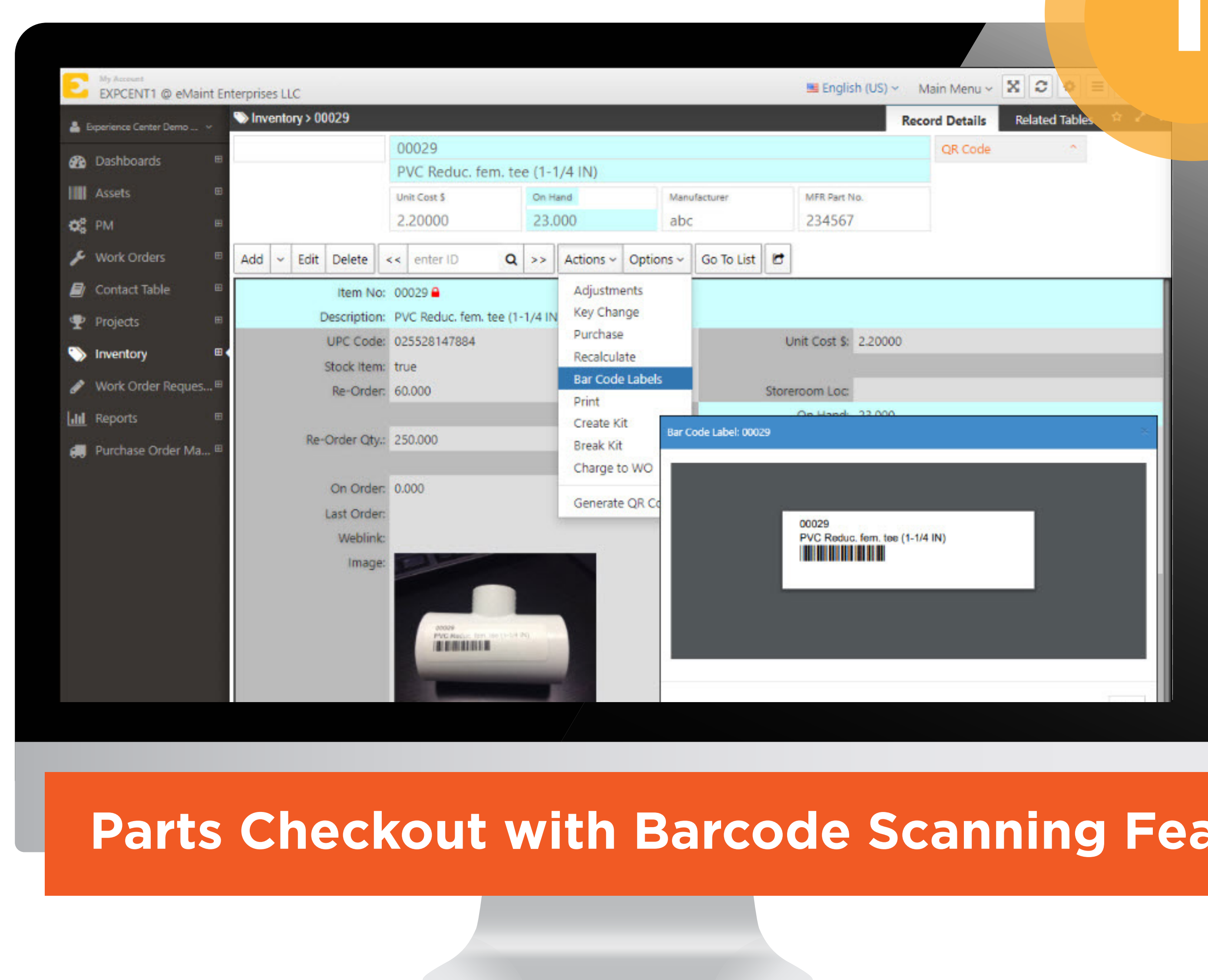


FIVE Powerful eMaint CMMS Features to Grow Your ROI

SCAN IT

Eliminate manual
barcode input

Scan or import barcodes into eMaint and assign parts to a work order (WO). View item number, description, parts on hand, unit cost, and checkout quantity on a smart device.



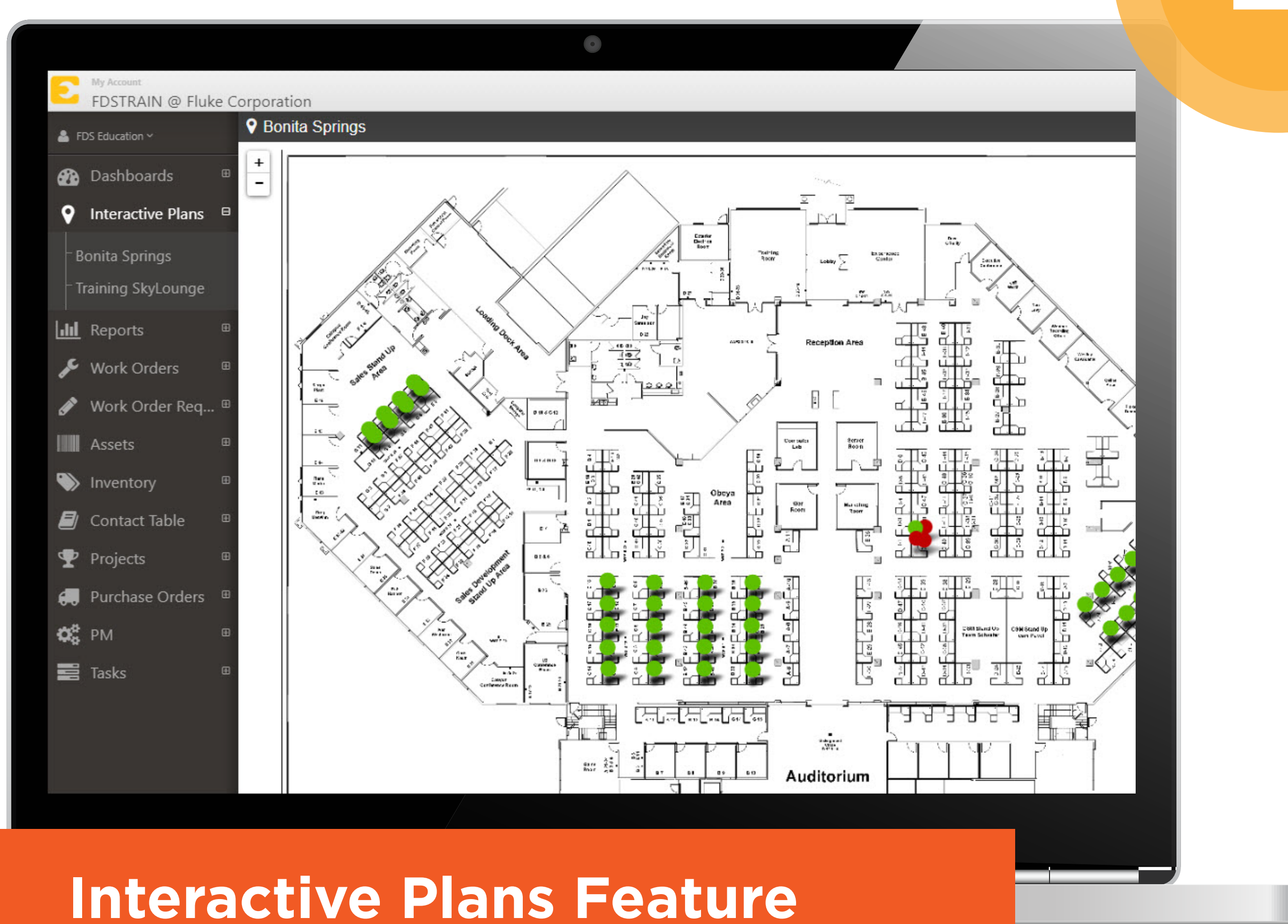
Parts Checkout with Barcode Scanning Feature

2.

MAP IT

Visualize asset location and data

Upload floor plans, site maps, schematics, or other images. Map asset locations using pins and hover over the pin to see a snapshot of asset details. From there, navigate to records and schedule work, view WO histories, and more.



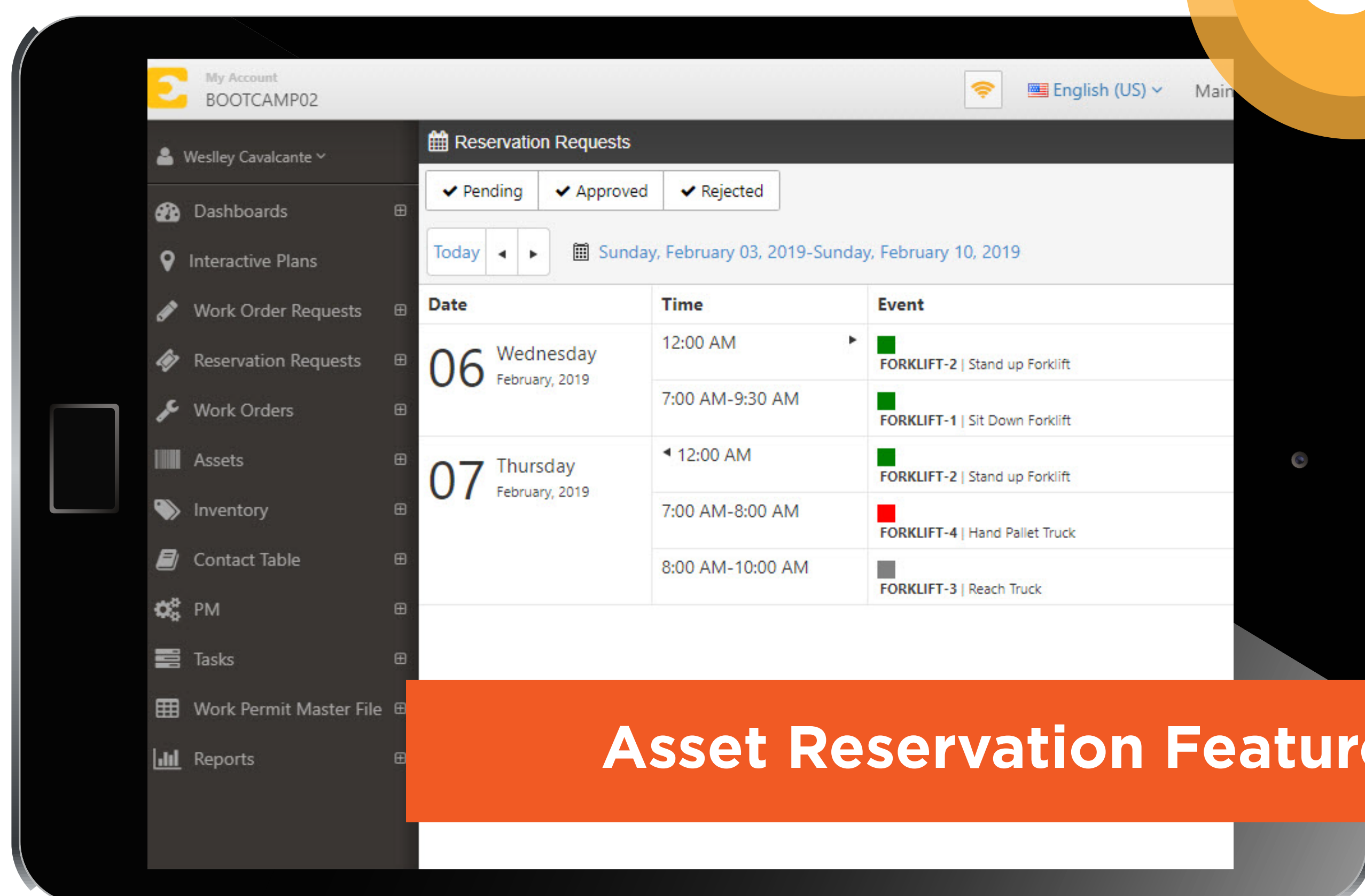
Interactive Plans Feature

3.

RESERVE IT

Eliminate reservation
conflicts

Use the system to request a room or vehicle reservation. Personnel receive an email stating if the request is approved or not. Once reserved, the room or vehicle becomes unavailable eliminating double bookings.



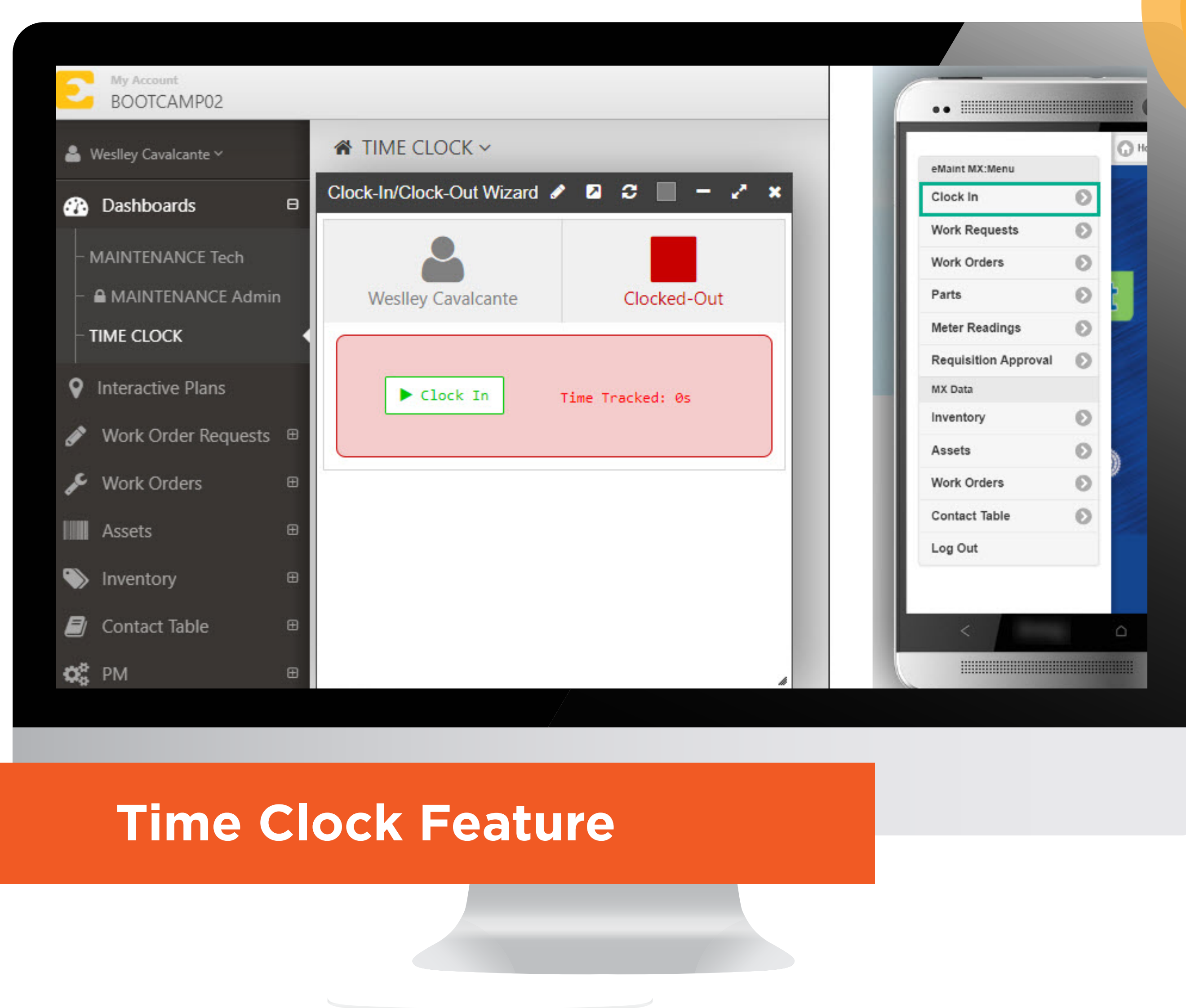
Asset Reservation Feature

4.

CLOCK IT

Ensure accurate WO clock
in and clock out times

Technicians clock in and out of a WO from a computer or mobile device. The system tracks the work location, along with sign-in/out times. Personnel who have not signed out of a work order cannot clock out.



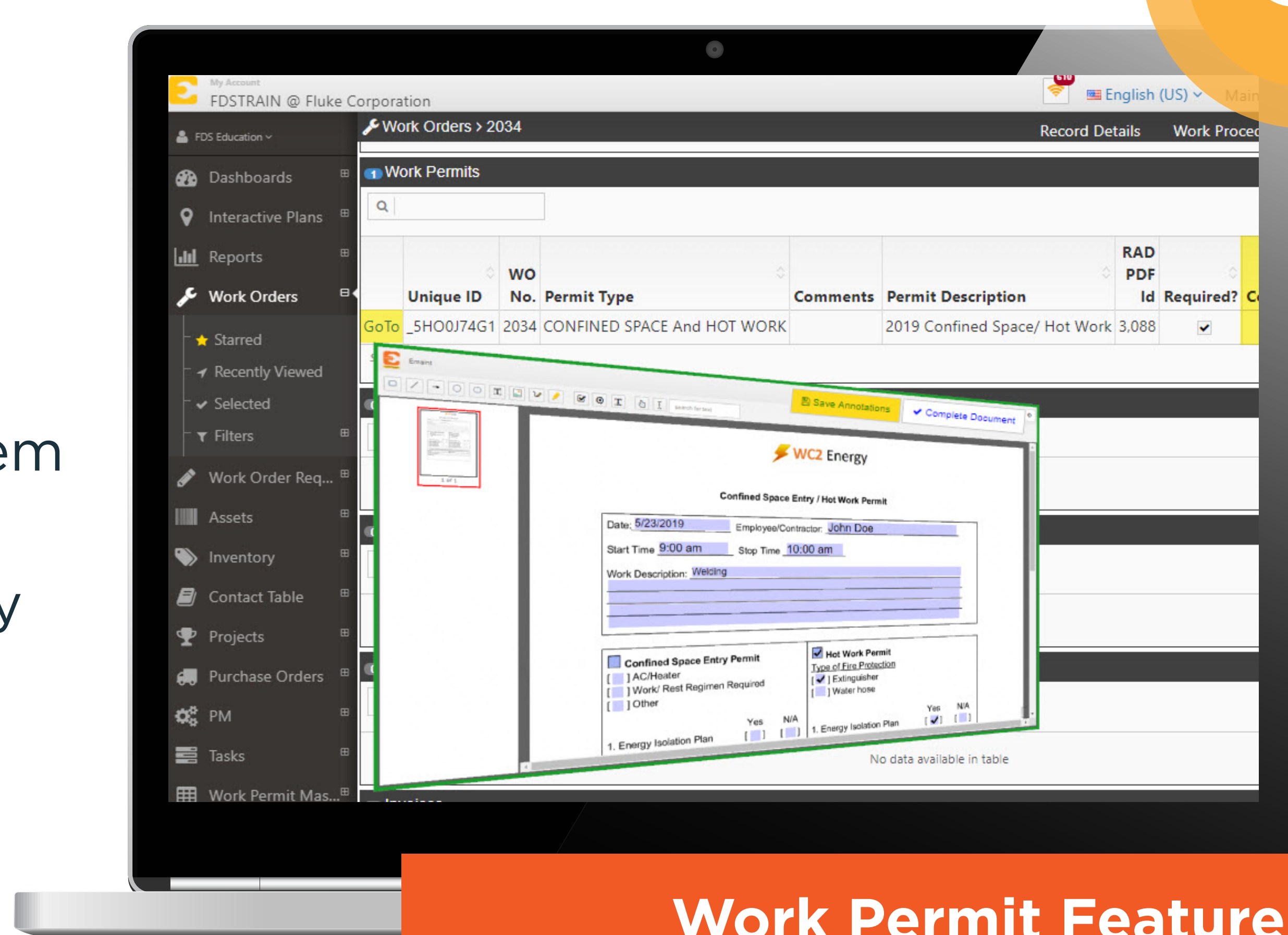
Time Clock Feature

5.

PERMIT IT

Streamline permitting
processes

Upload forms as PDFs and revise them as needed using the built-in editor. Contractors access and electronically sign the permit. Managers can view, route, and track the document to confirm required signoffs.



Work Permit Feature